

**TITLE OF PAPER (STYLE HEADING 1: FONT FORMATS -  
TIMES NEW ROMAN, 12 PT BOLD, ALL CAPS; PARAGRAPH  
FORMATS: CENTERED, SPACING BEFORE 30 PT, SPACING  
AFTER 0 PT, KEEP WITH NEXT, KEEP LINES TOGETHER,  
MAXIMUM 20 WORDS)**

*UDC (12pt italic, centered, spacing before 6 pt, spacing after 30 pt,  
keep with next)*

### **Authors**

**(Style Heading 2: 10pt bold, title case, centered, spacing before 0 pt,  
spacing after 12 pt, keep with next, keep lines together)**

Affiliation (Style Affiliation: 10pt, centered, spacing before 0 pt, after 18 pt, keep with  
next)

**Abstract.** *Short abstract (Style Abstract: 9 pt, italic, pt, justified, 0.75 pt left and right  
indentation, maximum 250 words).*

**Key words:** *key word 1, key word 2... to (max) key word 6*

1. MAIN HEADING (STYLE HEADING 3: SMALL CAPS 10 PT, CENTERED, SPACING BEFORE  
24 PT, SPACING AFTER 6 PT, KEEP WITH NEXT, KEEP LINES TOGETHER)

**Main text:** only use characters and symbols available in the Times New Roman or  
Symbol font (as in the full text of paper), 10 pt; paragraph format: justified alignment,  
left and right indent 0 pt, space before and after 0 pt, first line indent 0.5 cm.

**1.1. Subheading (Style Heading 4: 10 pt, bold, left, indentation left 5 pt,  
spacing before 12 pt, after 6 pt, keep with next, keep lines together)**

Sample of main text. Sample of main text. Sample of main text. Sample of main text.  
Sample of main text. Sample of main text. Sample of main text. Sample of main text.  
Sample of main text. Sample of main text. Sample of main text. Sample of main text.

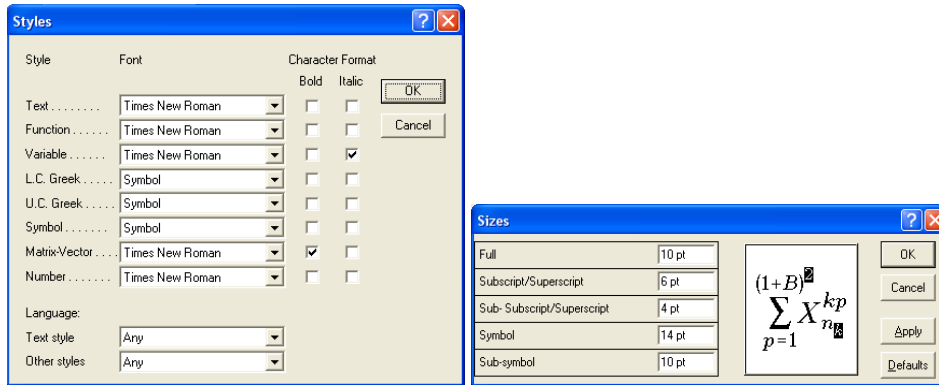
---

**Corresponding author:** First and Last name \_\_\_\_\_  
Affiliating institution, Address of institution \_\_\_\_\_  
Phone: + \_\_\_\_ - \_\_\_\_\_ • E-mail: \_\_\_\_\_

*1.1.1. Subheading (Style Heading 5: 10 pt, italic, left, indentation left 5 pt, spacing before 12 pt, after 6pt, keep with next, keep lines together)*

Sample of main text. Sample of main text. Sample of main text. Sample of main text. Sample of main text. Sample of main text. Sample of main text. Sample of main text. Sample of main text. Sample of main text. Sample of main text. Sample of main text.

**Equations** should be prepared using Equation Editor as a part of MS Word, with styles and sizes as defined (see Fig. 1).

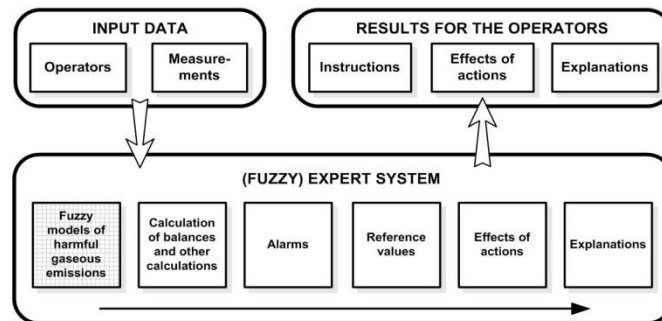


**Fig. 1** Title of figure

$$h_{ci} = \frac{q}{S(T_{wi} - T_b)} \quad (1)$$

Paragraph format for equations are (Style Equation): left indentation, 6 pt before and after, equation is at position of centered tab at 6.25 cm, number of equation is at position of right tab at 12.7 cm.

**Illustrations: figures, photographs, line drawings, (Styles Figure, Figure Title)**



**Fig. 2** Title of figure

**All illustrations (figures, photographs, line drawings, graphs)** should be numbered in series and all legends should be included at the bottom of each illustration. All **figures, photographs, line drawings and graphs**, prepared in electronic form, should be converted in TIFF or JPG (max quality) files, in 300 dpi resolution, for superior reproduction. Figures, line drawings and graphs prepared using elements of MS Drawing or MS Graph must be converted in form of pictures and unchangeable. All illustrations should be planned in advance so as to allow reduction to 12.75 cm in column width. Please review all illustrations to ensure that they are readable.

## Tables

**Table 1** Title of table (Style Table title)

| System             | Symbol |
|--------------------|--------|
| Without delay      | +      |
| Delay $h = 1$      | -      |
| Delay $h = N = 34$ | *      |

All tables should be numbered with consecutive Arabic numbers. They should have descriptive captions at the top of each table and should be mentioned in the text.

**Acknowledgement:** *The paper is a part of the research done within the project 1234567890. The authors would like to thank to the... (Style Acknowledgement).*

## REFERENCES

Reference style: 8 pt; paragraph format: justified alignment, left and right indent 0 pt, space before and after 0 pt, hanging 0.5 cm, single line spacing

## **TITLE IN SERBIAN (12PT BOLD, CENTERED, SPACE BEFORE 24PT, 6 PT SPACE AFTER, KEEP WITH NEXT)**

*Abstract in Serbian (9pt, 0,5 cm, special first line 0,5 cm, justified).*

Key words: *in Serbian*